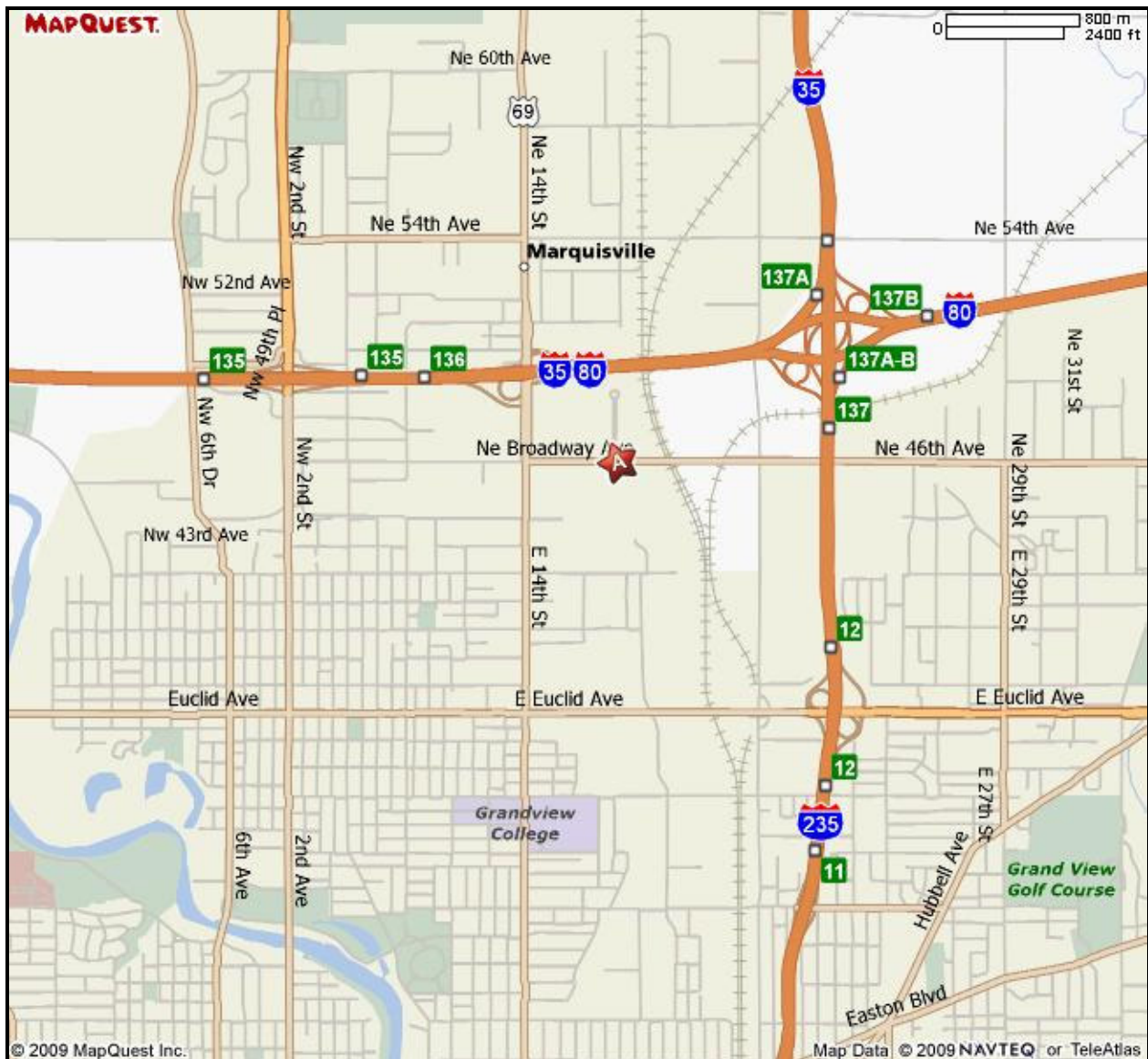


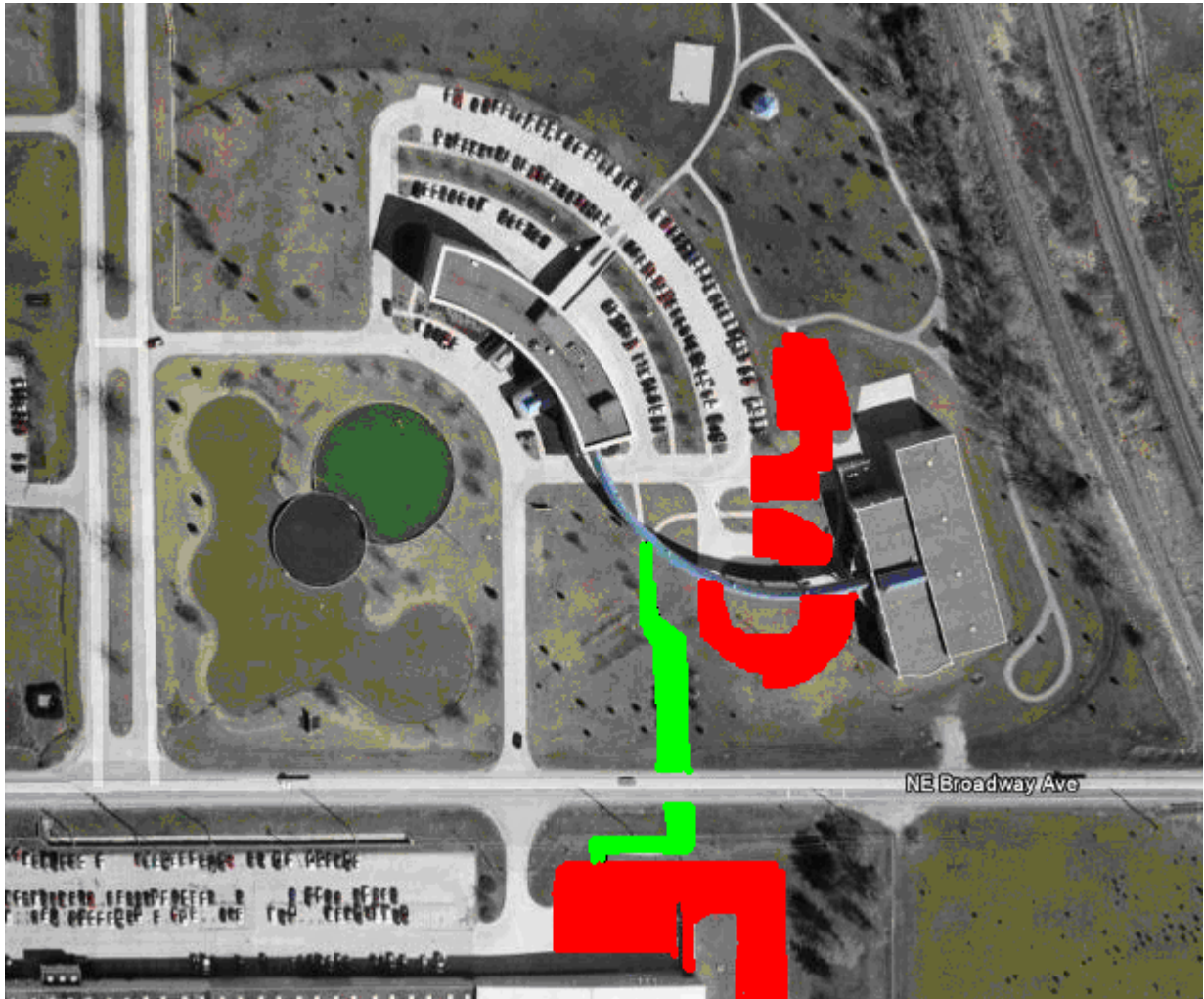
## EFCO's Concrete Construction and Forming Institute Directions for Visitors to the Institute

To reach EFCO in Des Moines, Iowa, the easiest and surest way of getting to EFCO is from the combination of I-35 and I-80 running East and West on the North side of Des Moines. Exit I-35 and I-80 at East 14<sup>th</sup> Street and drive south on East 14<sup>th</sup>. At Broadway Avenue, about ¼ of a mile South of I-35/I-80 at the big overhead stoplight structure, turn left and go East another ¼ of a mile. The EFCO Center and EFCO's Concrete Construction and Forming Institute are on the North side of Broadway and the manufacturing plants are on the South side of Broadway.

### LOCATION OF THE EFCO CENTER



## PARKING



EFCO's Concrete Construction and Forming Institute guest parking is noted with the red highlighted areas. If the area in front of the Institute is full, please park across the street in the overflow parking lot. There is a sidewalk under the road to get to the Institute.